

RBBB Dining Department

The Cookhouse and dining tent on the Ringling Brothers. Barnum bailey Circus was referred to as the "Hotel Ringling." It was the first unit to be set up each morning and would serve three complete meals daily. George Blood was the Chief Steward on the show for many years; however, following his death in 1955, John Staley headed the department in the final year of 1956.

A separate tent was used for the cookhouse and the range wagons were parked inside. Special cutouts were built into the tent to allow the smoke slacks from the ranges inside the wagons. All food was prepared here and carried to steam tables inside dining tent.

The Dining tent was large round end top three middle sections. It was basically a bale ring top; however each middle section had a push pole between the main poles to help support the weight. The tent was divided into two sections called: the long side, where the working men ate and the short side where the staff and performers eat. A canvas partition divided the sections.

Everyone was assigned a specific place to eat and each table had its own waiter. Each department head passed out meal ticket stubs to his employees daily and these had to be presented in order to be admitted to the dining tent.

Wagons

- No. 1 Water Wagon
- No. 2 Generators
- No. 3 Range Wagon
- No. 4 Refrigerator
- No. 5 Tables and Equipment
- No. 6 Dishwasher
- No. 7 Range Wagon
- No. 8 Canvas and Poles

Additional wagons not directly associated with the cookhouse.

- No. 14 Commissary
- No. 103 Backyard Diner

Ringling Bros. Barnum & Bailey Dining Department

DATE: 1950s

SCALE: 1/4" = 1'

SCANNED & REVISED:
12/02/01

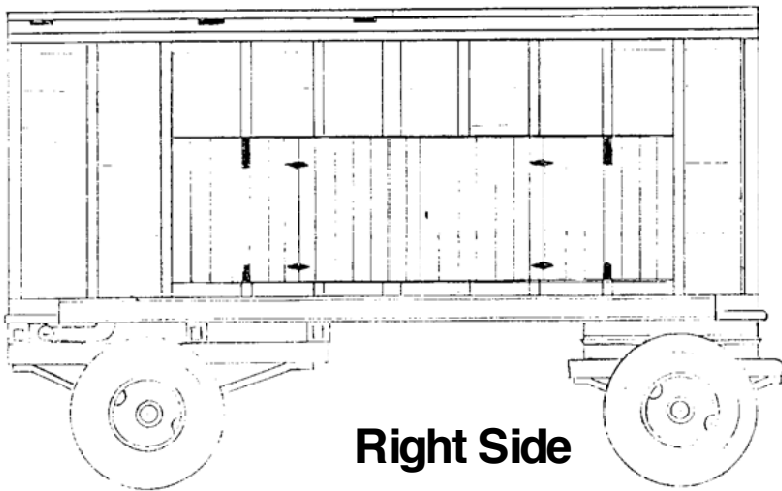
Pg 1 of 11

Circus Model Builders

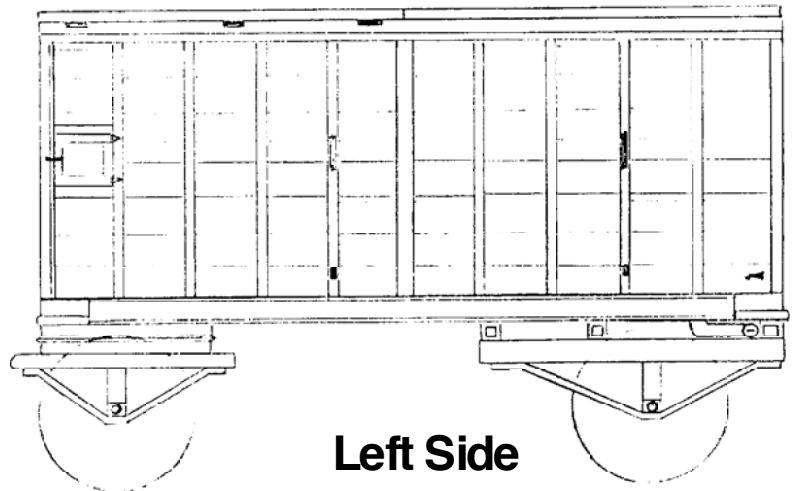
Drawn By
Jim Caldwell

DRAWING NUMBER
#0274

Water Wagon No. 1



Right Side



Left Side

Dimensions

15' :3" Long
5' 10" Wide

5' 10" High not including roof section)

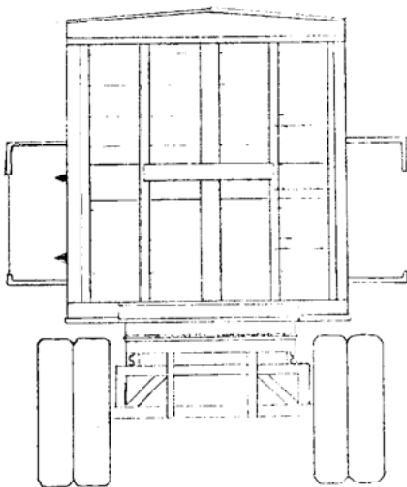
Racks on each side of wagon stuck out 14 inches.

Painted green as was all Dining Dept. wagons since 1952

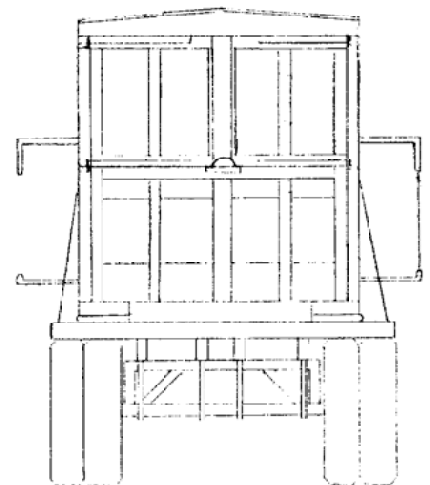
Number 1 wagon contained a tank in the bottom half of the wagon which supplied water for the cookhouse. it was originally an open top wagon; but, later in the 1950's a roof was added and a box built on the side to carry the steam tables.

A rack over the tank, and even with the back doors, allowed for loading of drums, empty milk cans, kettles of grease, crates of vegetables, bags of onions. etc. There is a small door near the front of the wagon on the right hand side where a filler pipe is located. The outlet pipes are located behind the rear wheels on each side.

The wagon is now located in the Circus Hall of Fame at Sarasota, Florida.



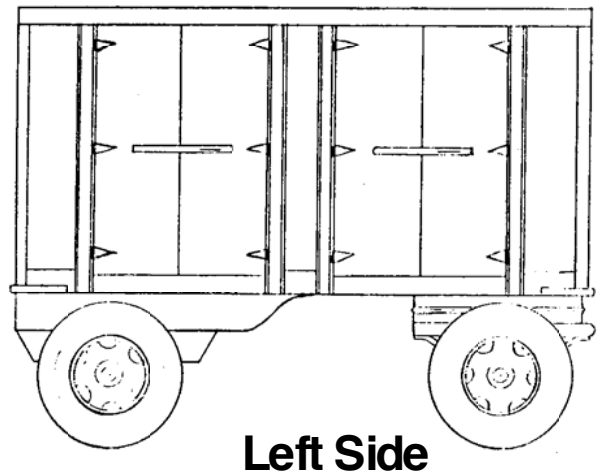
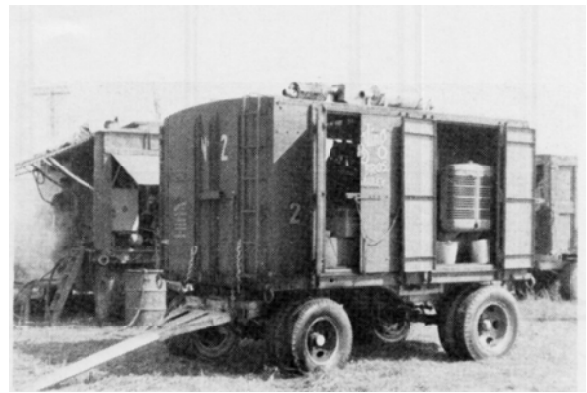
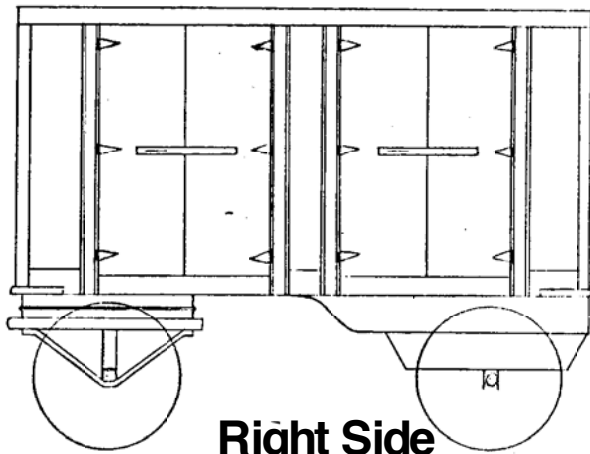
Front



Rear

**Ringling Bros. Barnum & Bailey
Dining Department**

Generator Wagon No. 2



Dimensions

11' 9" Long

7' 0" Wide

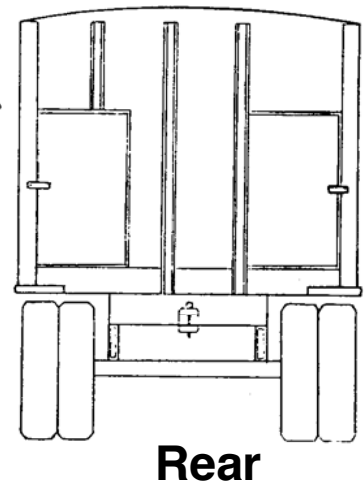
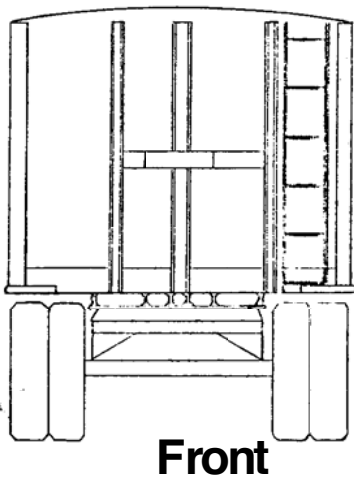
5' 6" High at side

Painted green with a silver interior.

Wagon No. 2 was of all steel construction and was used as the cookhouse generator wagon during the 1950's. It was rebuilt from an old cage wagon and replaced the former Clever-Brooks boiler wagon that was on the show for many years.

The cookhouse generators were previously carried in the front portion of the range wagons and the dishwasher; however, a number of changes were made in the cookhouse equipment for the 1952 season. By consolidating the generators in one wagon, this opened up space in the front of the range wagons for additional supplies.

The wagon was destroyed in a fire at the Venice quarters on March 19, 1962.



**Ringling Bros. Barnum & Bailey
Dining Department**

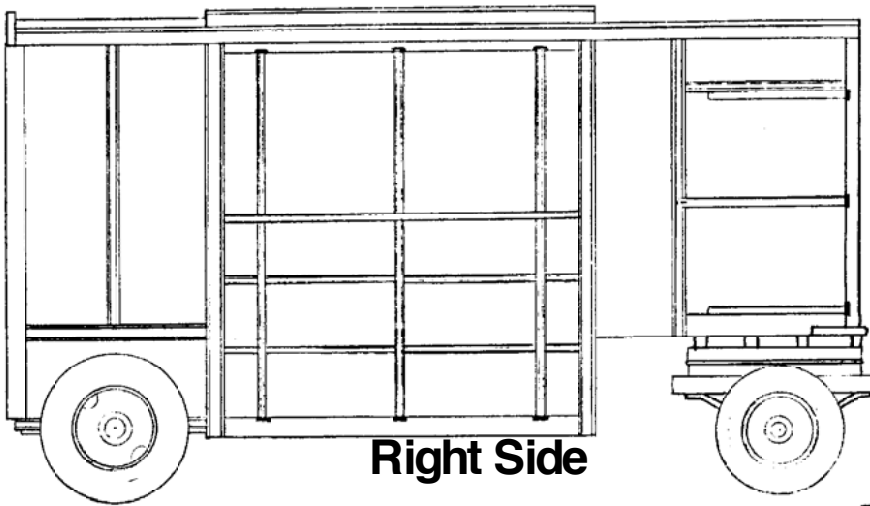
Pg 3 of 11

SCALE: 1/4" = 1'

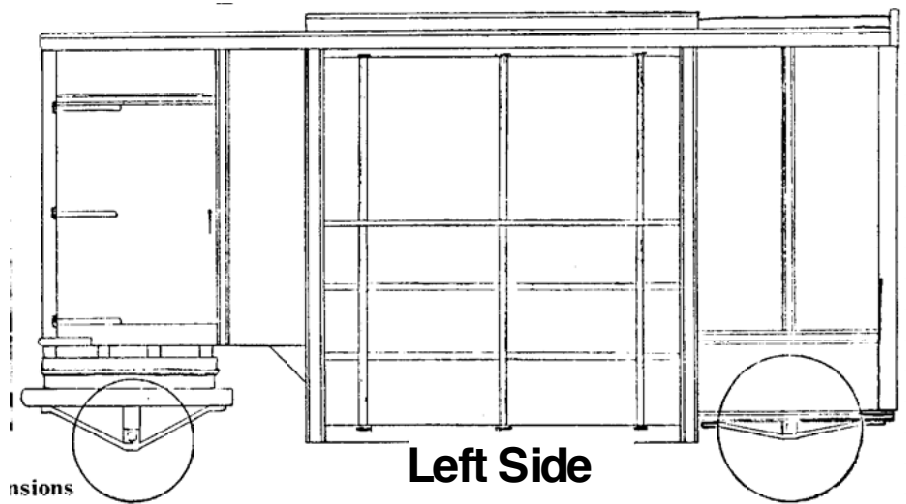
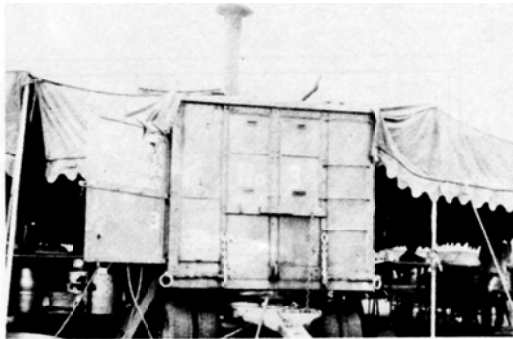
SCANNED & REVISED:
12/02/01

DRAWING NUMBER
#0274

Range Wagon No. 3



Right Side



Left Side

Dimensions

17' 6" Long

7' 6" Wide

6' 0" High in front

7' 3" High in rear

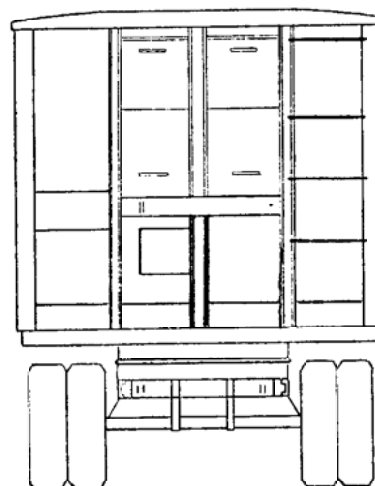
5' 3" To drop, from front

Painted green with a silver interior from 1952 through 1956. Originally painted red with a silver interior.

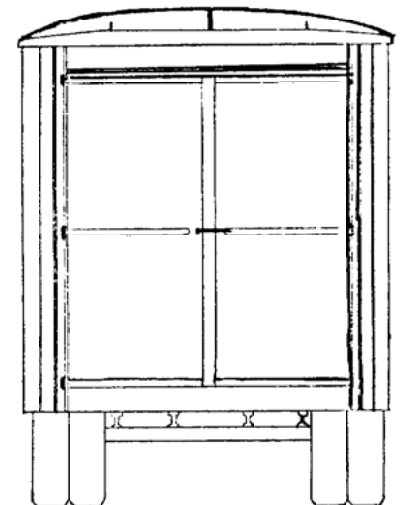
Wagon No. 3 was of all steel construction and was built prior to the 1945 season. Along with range wagon No. 7, they made the Ringling cookhouse the most modern dining facility on the road. Both wagons were equipped with two fuel oil ranges, which sat back to back in the middle section. The doors of this section opened down and formed a platform on which the cooks could stand.

The fuel tank was located in the front section and the rear section contained a large mixer for potatoes and dough, etc. The rear doors of this wagon opened out in the conventional manner.

The wagon is presently located in a junkyard in Houston, Texas.



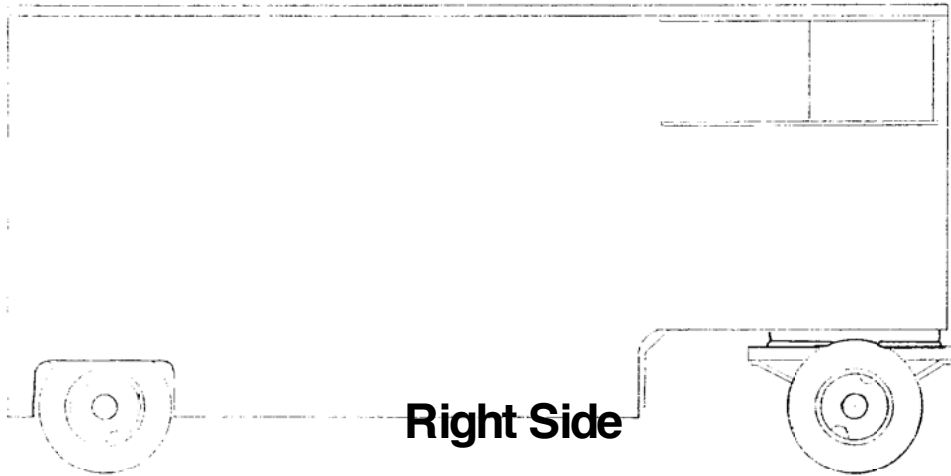
Front



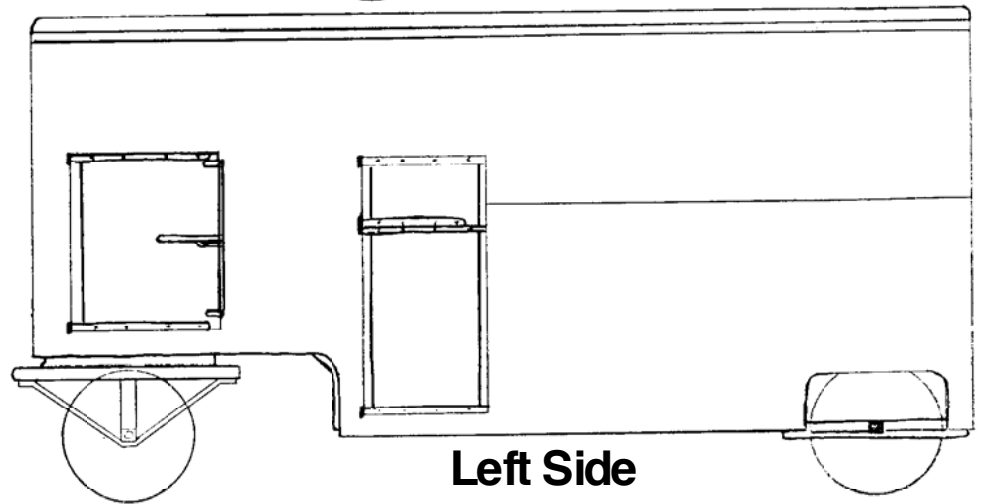
Rear

**Ringling Bros. Barnum & Bailey
Dining Department**

Refrigerator Wagon No. 4



Right Side



Left Side

Dimensions

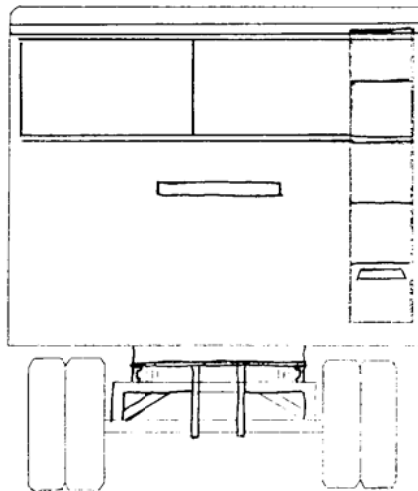
- 19' 3" Long
- 8' 6" Wide
- 6' 6" High in Front
- 8' 6" High in Rear
- 6' 3" To drop, from front

Painted green with a silver interior.

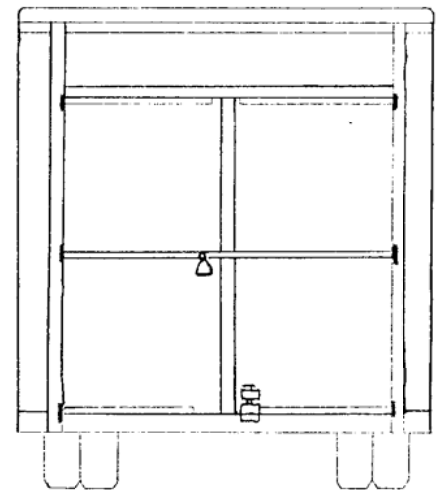
Wagon No. 4 was of all steel construction and was built new in the early 1950's. It was a very large capacity wagon and was used to carry supplies for the cookhouse. The front portion was refrigerated, while the rear section carried items which did not need refrigeration, such as canned goods, etc. With the larger capacity, it actually replaced two wagons: the old No. 4 refrigerator and No. 6 the former supply wagon. However, some of supplies were now carried in the front portion of the range wagons.

This wagon was always loaded on the same flat car as the No. 2 generator wagon. Electrical cables were connected to the refrigeration unit and a man stayed in the generator wagon overnight to prevent any chance of spoilage while enroute.

The wagon is presently located in a junkyard in Houston, Texas.

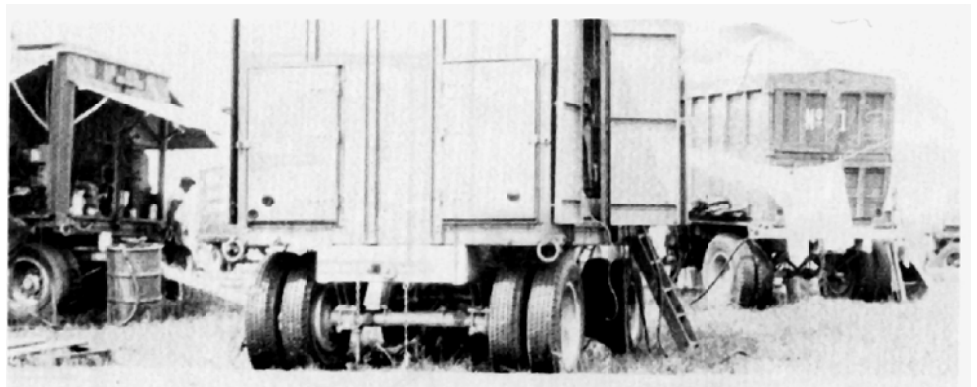


Front



Rear

**Ringling Bros. Barnum & Bailey
Dining Department**



*Top Right: 1954 Dining Tent
 Top Left: No. 4 in the Grave Yard
 Left: Loading No. 8, 1955
 Above: Rear of No. 2, 1954
 Lower Left: Rear of No. 4
 Lower Right: 1952 cookhouse lot
 showing No. 1 and No. 6*

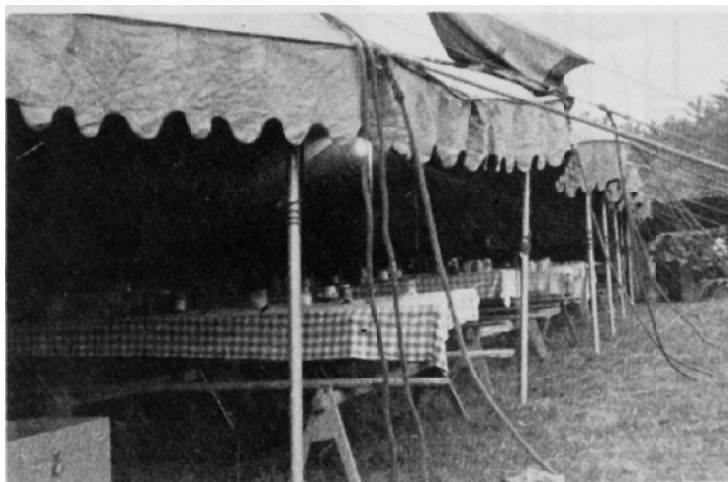
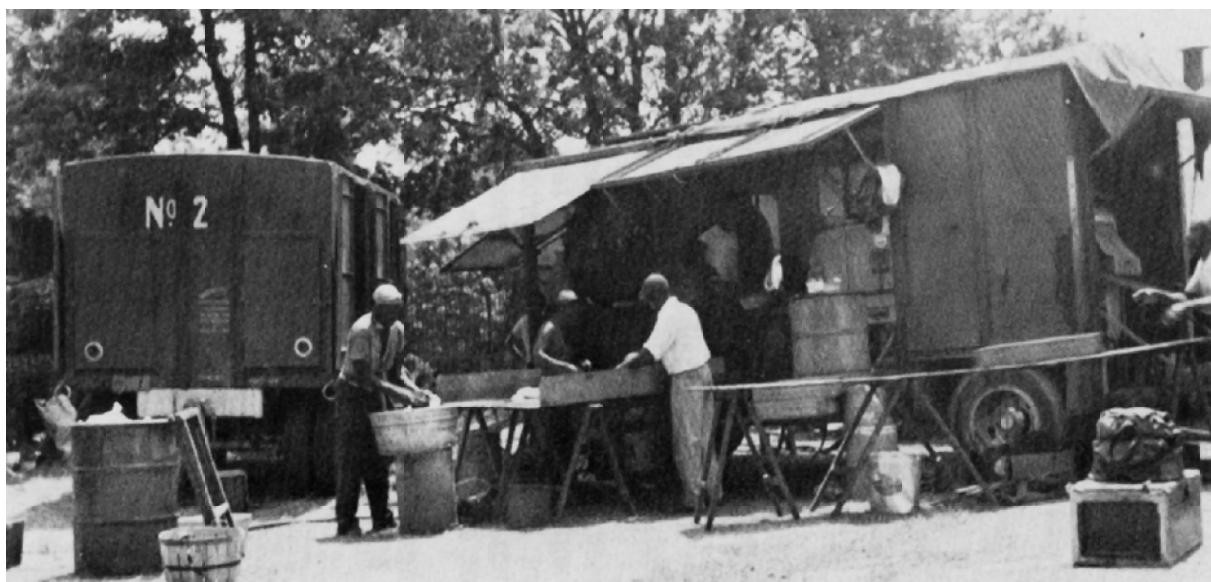
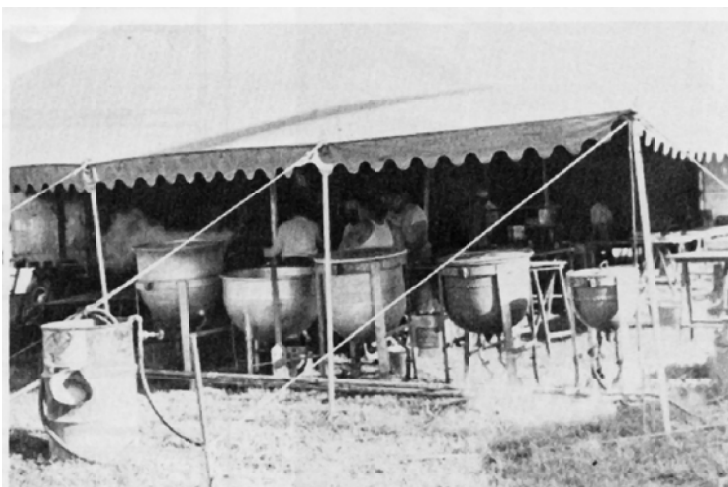
Ringling Bros. Barnum & Bailey Dining Department

Pg 6 of 11

SCALE: 1/4" = 1'

SCANNED & REVISED:
12/02/01

DRAWING NUMBER
#0274



Ringling Bros. Barnum & Bailey Dining Department

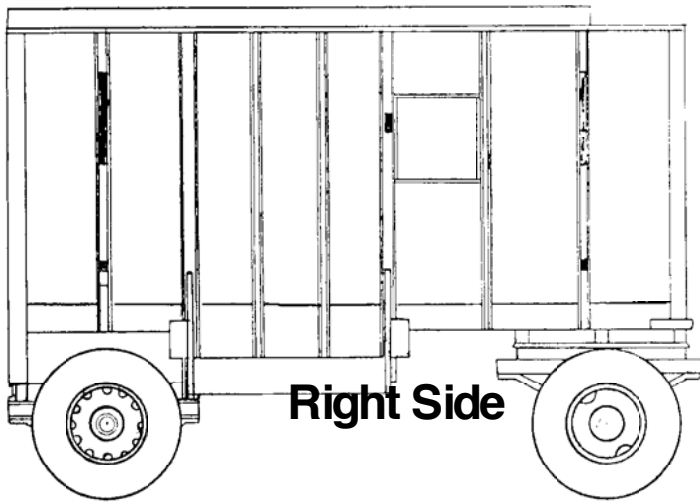
Pg 7 of 11

SCALE: 1/4" = 1'

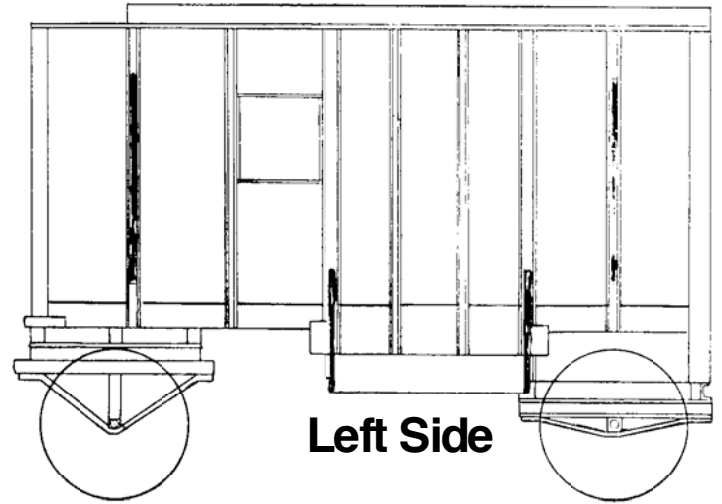
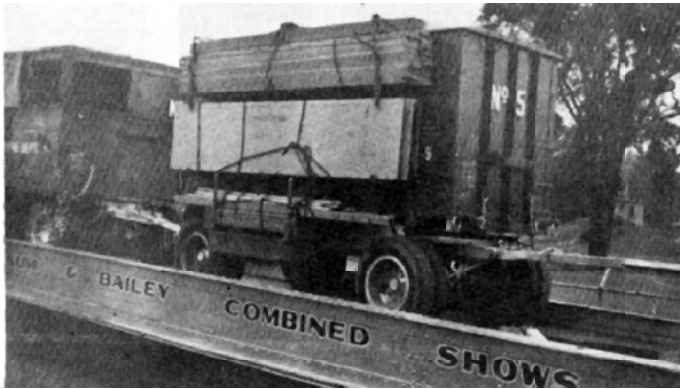
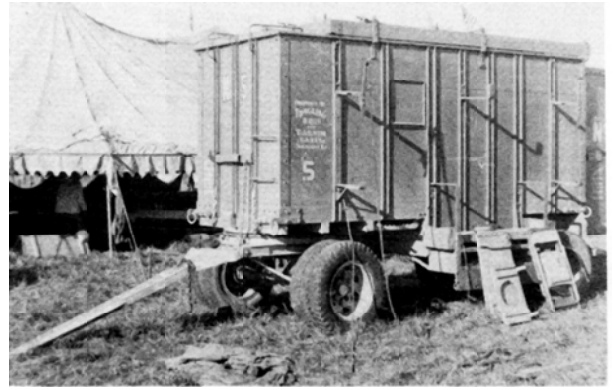
SCANNED & REVISED:
12/02/01

DRAWING NUMBER
#0274

Cookhouse Baggage Wagon No. 5



Right Side



Left Side

Dimensions

14' 1" Long

5' 7" Wide

6' 0" High in front

7' 2" High in rear

6' 0" To drop, from front

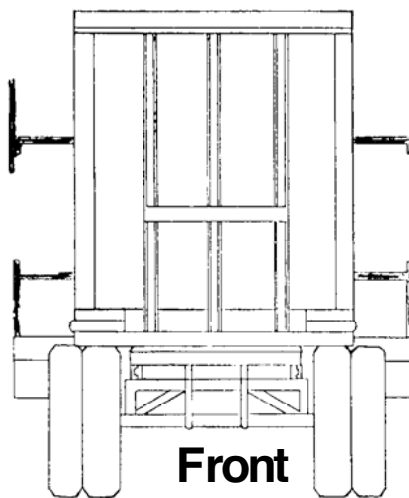
Racks on each side of wagon stuck out 17 inches

Painted green as were all cookhouse equipment since 1952. The interior was painted silver. Other years it was a light green, light blue, and iron oxide primer color.

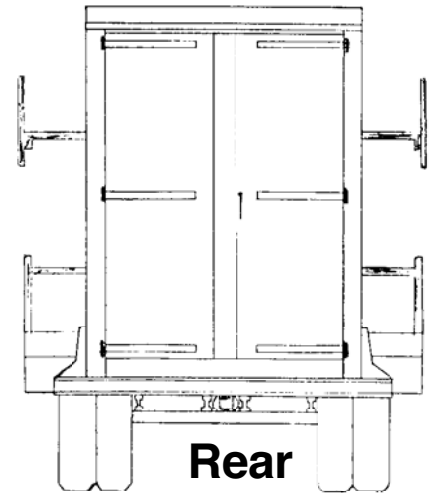
The steel sided wagon No. 5 was originally built in the middle 1940's and numbered No. 91. It was always part of the cookhouse and later replaced the wooden sided No. 5 wagon that was used throughout the 1940's. Around 1951, racks were added to the sides to carry dining tables.

It carried the entire short end (performers and staff) side of the dining tent equipment: tables, jacks, stringers, irons, and the boxes for each table. The steam kettles for cookhouse also loaded in this wagon.

The wagon is now located outside the Ringling Museum at Sarasota, Florida.



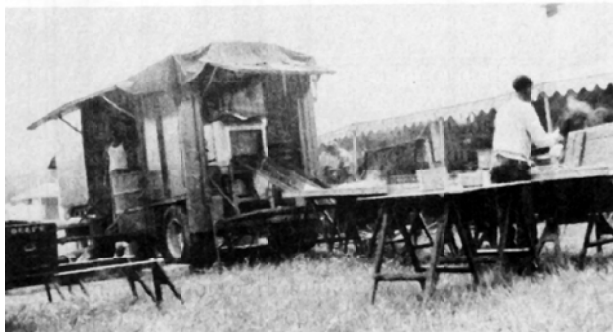
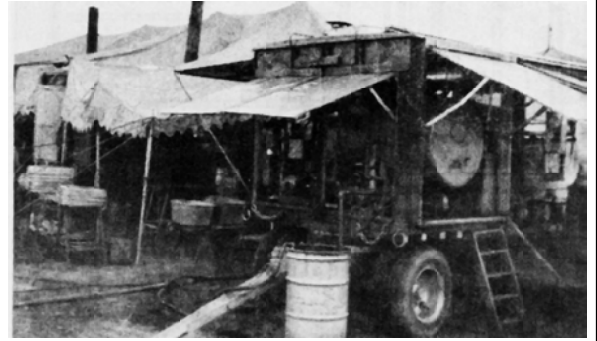
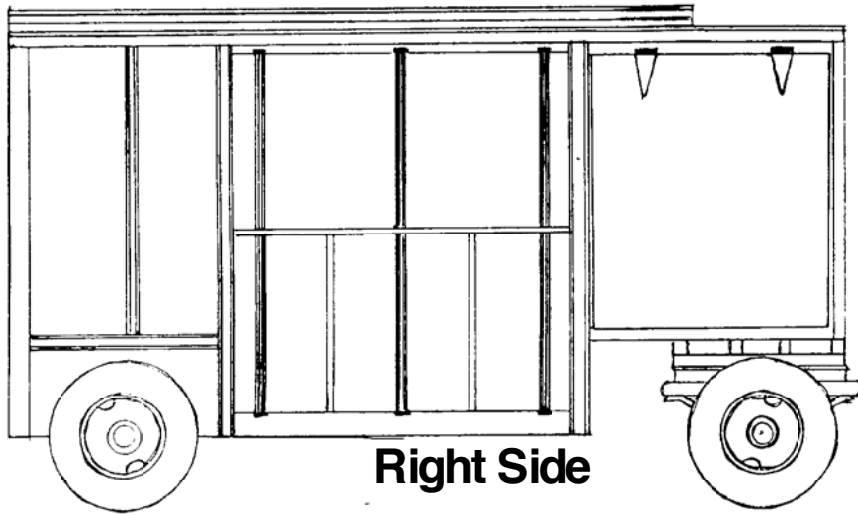
Front



Rear

**Ringling Bros. Barnum & Bailey
Dining Department**

Dishwasher Wagon No. 6



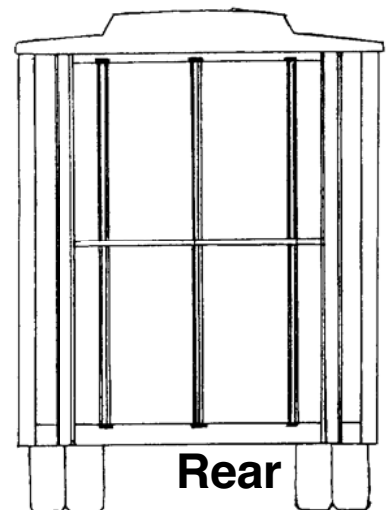
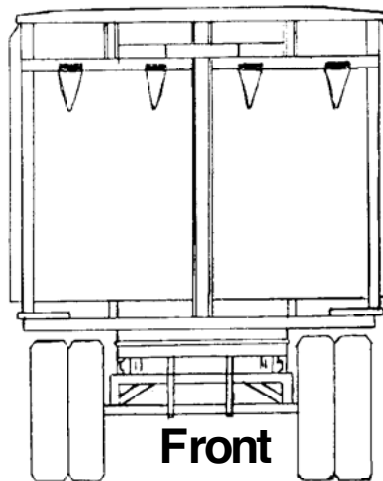
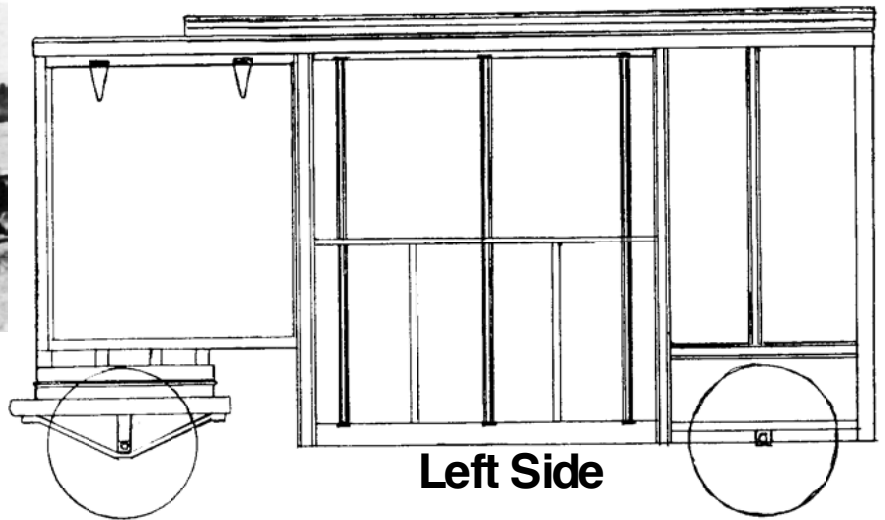
Dimensions

- 17' 0" Long
- 7' 3" Wide
- 6' 0" High in front
- 8' 0" High in rear
- 5' 3" To drop from front

Painted green with a silver interior from 1952 through 1956. Originally painted red with a silver interior.

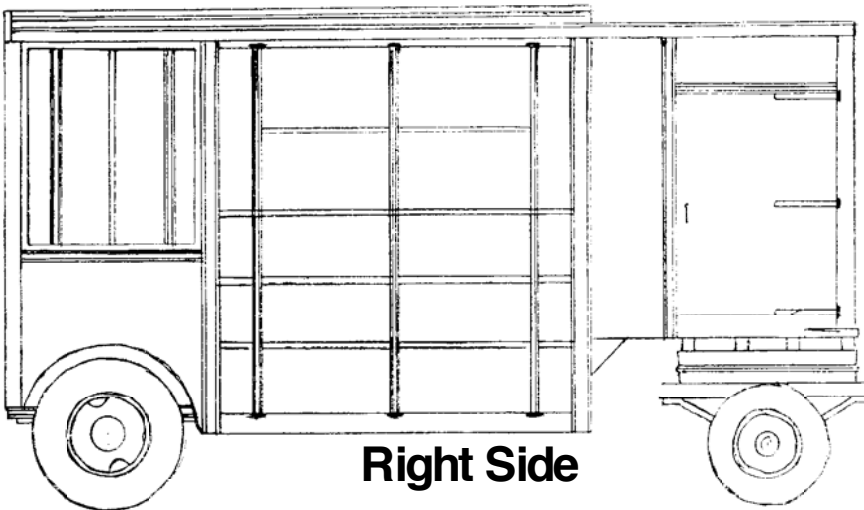
Wagon No. 6 was of all steel construction and was built around 1945. It was originally numbered No. 90 with the number being changed to No. 6 in the early 1950's. The doors on the sides and back opened down and tables were placed so that the dishes could be placed in racks and fed through the permanently mounted dishwasher. The boxes for the dishes were spotted at the clean end for easy access.

Originally a generator was carried in the front portion of the wagon; but, when the generators were consolidated in the new No. 2 wagon, the boiler was installed in this space. The wagon is now located outside the Ringling Museum in Sarasota, Florida.

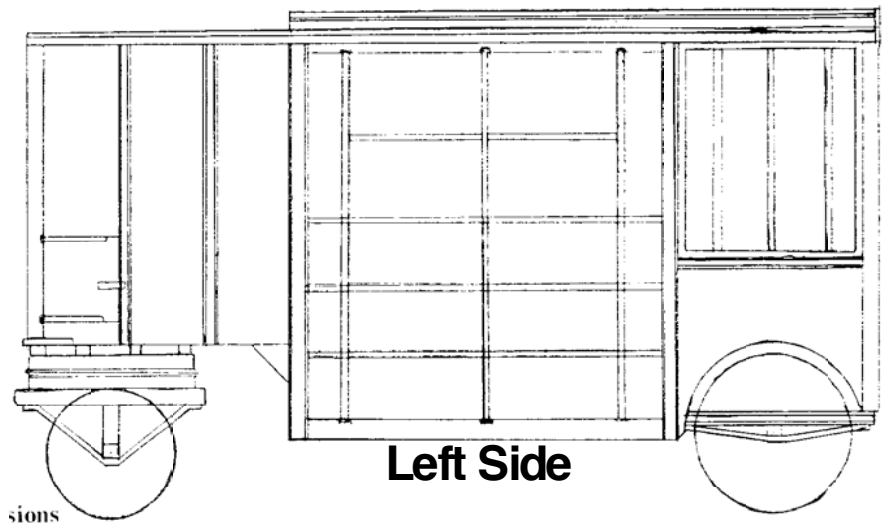
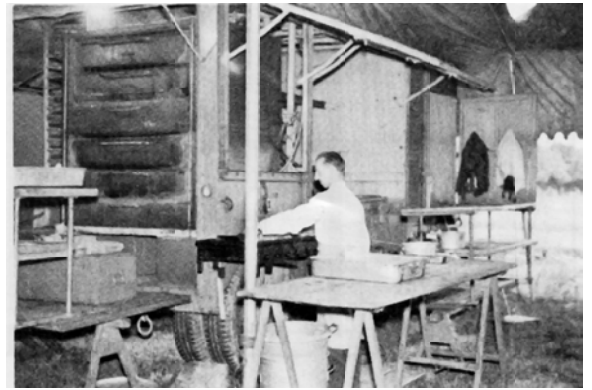


**Ringling Bros. Barnum & Bailey
Dining Department**

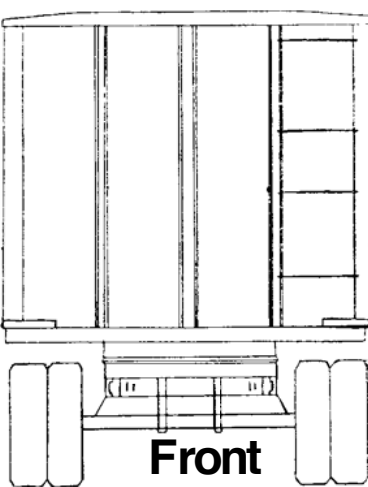
Range Wagon No. 7



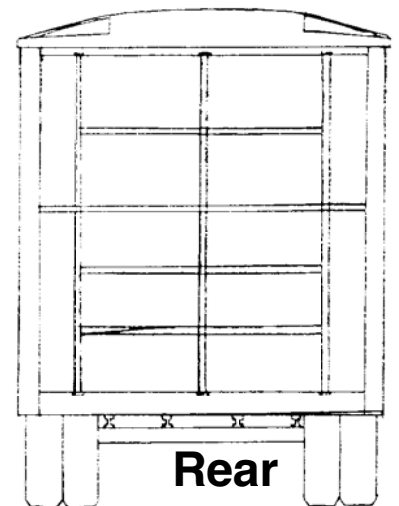
Right Side



Left Side



Front



Rear

Dimensions

- 17' 6" Long
- 7' 6" Wide
- 6' 0" High in front
- 7' 3" High in rear
- 5' 3" To drop, from front

Painted green with a silver interior from 1952 through 1936. Originally painted red with a silver interior.

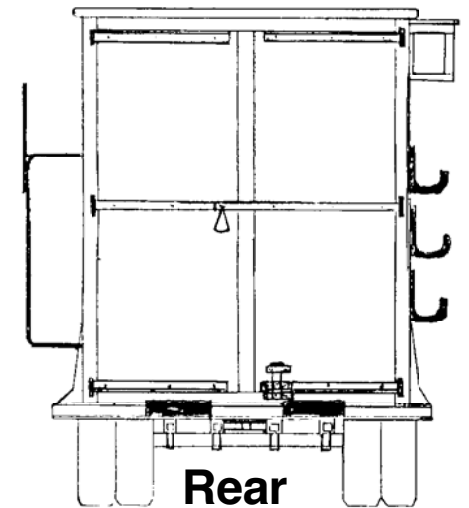
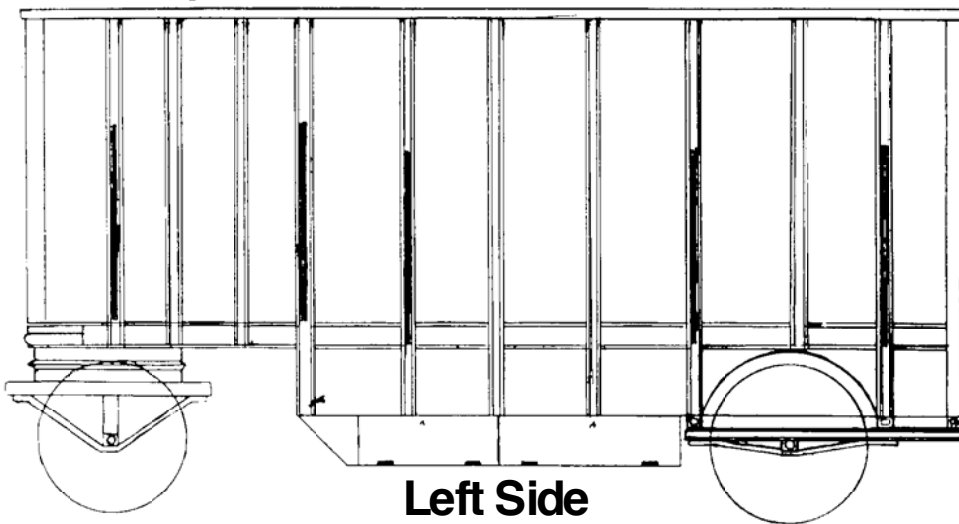
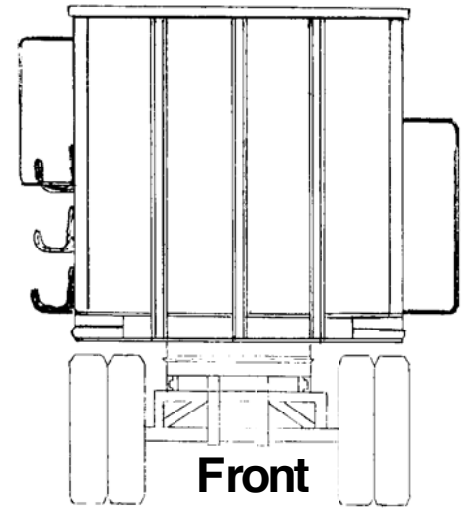
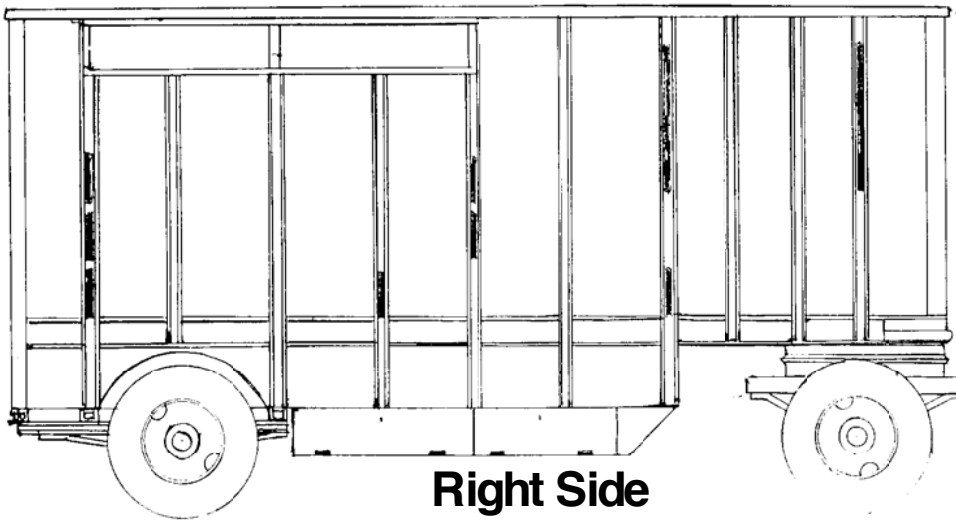
Wagon No. 7 was of all steel construction and was built prior to the 1945 season. It was similar in design to range wagon No. 3; however, the rear section of No. 7 was not partitioned off and contained a large oven.

The middle section also contained two fuel oil ranges, with the fuel tank located in the front section of the wagon. Although the channel structure on the sides of the wagon differs somewhat from No. 3, the only other difference is that the rear doors fold down to make a platform the same as the sides.

The wagon is presently located in a junk yard in Houston, Texas.

**Ringling Bros. Barnum & Bailey
Dining Department**

Canvas Wagon No. 8



Dimensions

19' 4" Long

6' 8" Wide

6' 9" High in front

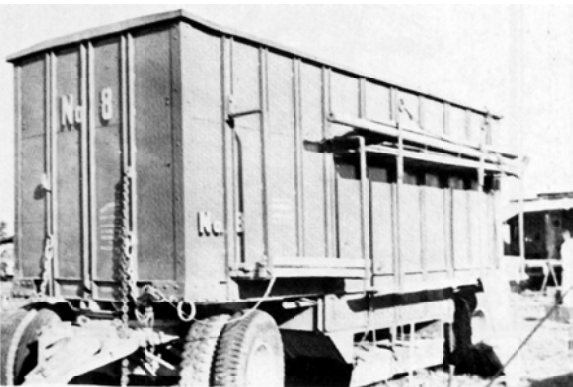
8' 0" High in rear

Painted green with a silver interior. Wagon No. 8 was of all steel construction and was built new for the 1952 season. It was a larger capacity wagon than the former wooden No. 8 which it replaced.

The wagon carried all of the canvas and poles for the cookhouse and dining tents. It also carried the remaining tables that were not loaded on No. 5 wagon.

Originally the canvas was loaded through the rear doors: but, later the rear portion of the roof was hinged so that it could be folded back and the canvas could be loaded with a boom cat.

The wagon is now located at the Circus World Museum in Baraboo, Wisconsin.



Ringling Bros. Barnum & Bailey Dining Department